

ADOPTED 4/9/26 ORDINANCE NO. 26-309

BE IT ORDAINED by the City Council of the City of Huntsville, Alabama, as follows:

Section 1. The City Council of the City of Huntsville, Alabama, finds that an application has been presented to the City of Huntsville requesting the vacation of utility and drainage easements; that the applicant has represented to the City of Huntsville that The City of Huntsville, Alabama, is the owner of the property across which said easements lie; that said easements, or the portions being vacated, are not presently used and are no longer needed for a public or municipal purpose.

Section 2. Pursuant to the findings in Section 1 hereinabove, the Mayor of the City of Huntsville, Alabama, is hereby authorized, requested and directed to execute a quitclaim deed vacating the easements hereinafter described, said deed being substantially in words and figures as follows, to-wit:

THIS INSTRUMENT PREPARED BY: Katherine Amos Beasley Lanier Ford Shaver & Payne, P.C. 2101 W. Clinton Ave., Ste. 102 Huntsville, Alabama 35805 256-535-1100

STATE OF ALABAMA COUNTY OF MADISON QUITCLAIM DEED FOR VACATION OF UTILITY AND DRAINAGE EASEMENTS

THIS INDENTURE made and entered into on this 9th day of April, 2026, by and between, CITY OF HUNTSVILLE, an Alabama municipal corporation ("Grantor") and CITY OF HUNTSVILLE, an Alabama municipal corporation ("Grantee").

WITNESSETH: That the Grantor, for and in consideration of Ten Dollars (\$10.00) in hand paid by Grantee, and other good and valuable consideration, the receipt and sufficiency whereof is hereby acknowledged, does hereby remise, release, quitclaim, and convey unto the Grantee, all of the Grantor's right, title, interest and claim in and to the following described six (6) utility and drainage easements situated and lying in the City of Huntsville, County of Madison, State of Alabama, to-wit (the "Easements"):

See Exhibits "A" - "F" attached hereto and incorporated herein, and said Easements being depicted in Exhibits "A-1" - "F-1" attached hereto.

TO HAVE AND TO HOLD unto the said Grantee, its successors and assigns forever.

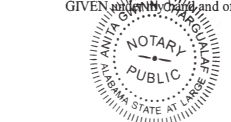
IN WITNESS WHEREOF, Grantor has caused this instrument to be duly executed on its behalf by its Mayor and attested by its City Clerk, pursuant to Ordinance 26-309, as of this 9th day of April, 2026.

[SIGNATURE PAGE TO FOLLOW] CITY OF HUNTSVILLE, an Alabama municipal corporation By: Tommy Battle, Mayor

ATTEST: S. Edwards, Shaudnika Edwards, City Clerk

STATE OF ALABAMA COUNTY OF MADISON I, the undersigned, a Notary Public in and for said County, in said State, hereby certify that Tommy Battle and Shaudnika Edwards, whose names as Mayor and City Clerk, respectively, of the CITY OF HUNTSVILLE, an Alabama municipal corporation are signed to the foregoing instrument, and who are known to me, acknowledged before me on this day that, being informed of the contents of the instrument, they, as such officers and with full authority, executed the same for and as the act of said municipal corporation.

GIVEN under my hand and official seal this 9th day of April, 2026. Notary Public Signature: Shaudnika Edwards



THIS INSTRUMENT WAS PREPARED SOLELY FROM INFORMATION PROVIDED TO THE DRAFTER. NO TITLE EXAMINATION HAS BEEN PERFORMED AND NO TITLE OPINION ISSUED IN CONNECTION WITH THIS TRANSACTION.

Pursuant to and in accordance with Section 40-22-1 of the Code of Alabama (1975), the following information is offered in lieu of submitting Form RT-1:

Grantor's Address: 305 Fountain Circle, Huntsville, Alabama 35801 Grantee's Address: 305 Fountain Circle, Huntsville, Alabama 35801 Property Address: 0.084 acre, 0.170 acre, 0.101 acre, 0.048 acre, 0.065 acre, & 0.044 acre U&D Easements located in NE 1/4 of S36, T2S, R1W, lying within Lots 4-8 of North Village Phase 1-A Purchase Price: \$N/A

Exhibit "A" (Legal Description of Vacated Easement A) A parcel of land situated in the Northeast Quarter of Section 36, Township 2 South, Range 1 West of the Huntsville Meridian, Madison County, Alabama, (BEARINGS AND/OR DISTANCES and COORDINATES referenced to the Alabama State Plane Coordinate System, East Zone, NAD83(2011)) and lying within Lots 4 and 5 of Huntsville North Village Phase 1-A as recorded in Plat Book 2026, Pages 41-42 in the Office of the Judge of Probate, Madison County, Alabama, and being a portion a 10-foot wide (total) Public Utility and Drainage Easement lying along the common lot line of said Lots 4 and 5, and being more particularly described as follows:

Commencing at the southeast corner of Lot 5 of said Huntsville North Village Phase 1-A, said point having Alabama State Plane Coordinates of N: 1574179.26, E: 433799.85; thence run North 08 degrees 32 minutes 36 seconds East, 32.07 feet along the common lot line of said Lots 4 and 5 to a point; thence, continuing along the common lot line of said Lots 4 and 5, run North 00 degrees 47 minutes 49 seconds East, 5.88 to the Point of Beginning;

Thence, from the Point of Beginning, run South 86 degrees 04 minutes 58 seconds West 5.02 feet along the north margin of a 450-foot wide TVA Transmission Line Right-of-Way (Deed Book 349, Page 707); thence, leaving the north margin of said TVA Transmission Line Right-of-Way, run North 00 degrees 47 minutes 49 seconds East 367.99 feet to a point; thence run South 89 degrees 12 minutes 11 seconds East 10.00 feet to a point; thence run South 00 degrees 47 minutes 49 seconds West 367.17 feet to a point lying on the north margin of said TVA Transmission Line Right-of-Way; thence run South 86 degrees 04 minutes 58 seconds West 5.02 feet, along the north margin of said TVA Transmission Line Right-of-Way, back to the Point of Beginning.

Said parcel contains 0.084 acres (3,676 sq. ft.) more or less.

Exhibit "A-1" (Depiction of Vacated Easement A) Diagram showing easement A-1 with bearings and distances, including Alabama State Plane Coordinates and a scale of 1" = 100'.

Exhibit "B" (Legal Description of Vacated Easement B) A parcel of land situated in the Northeast Quarter of Section 36, Township 2 South, Range 1 West of the Huntsville Meridian, Madison County, Alabama, (BEARINGS AND/OR DISTANCES and COORDINATES referenced to the Alabama State Plane Coordinate System, East Zone, NAD83(2011)) and lying within Lot 7 of Huntsville North Village Phase 1-A as recorded in Plat Book 2026, Pages 41-42 in the Office of the Judge of Probate, Madison County, Alabama, and being a portion a 30-foot wide Public Utility and Drainage Easement and being more particularly described as follows:

Commencing at the northwest corner of Lot 7 of said Huntsville North Village Phase 1-A, said point having Alabama State Plane Coordinates of N: 1575112.04, E: 432725.94; thence run South 47 degrees 24 minutes 07 seconds East, 41.18 feet to the Point of Beginning;

Thence, from the Point of Beginning, run thence run North 88 degrees 04 minutes 22 seconds East 48.00 feet to a point; thence run South 49 degrees 23 minutes 12 seconds West 78.31 feet to a point; thence run South 20 degrees 36 minutes 53 seconds West 40.75 feet to a point; thence run North 01 degree 29 minutes 37 seconds East 66.87 feet to a point; thence run North 49 degrees 23 minutes 12 seconds East 31.72 feet back to the Point of Beginning.

Said parcel contains 0.048 acres (2,097 sq. ft.) more or less.

Exhibit "B-1" (Depiction of Vacated Easement B) Diagram showing easement B-1 with bearings and distances, including Alabama State Plane Coordinates and a scale of 1" = 100'.

Exhibit "C" (Legal Description of Vacated Easement C) A parcel of land situated in the Northeast Quarter of Section 36, Township 2 South, Range 1 West of the Huntsville Meridian, Madison County, Alabama, (BEARINGS AND/OR DISTANCES and COORDINATES referenced to the Alabama State Plane Coordinate System, East Zone, NAD83(2011)) and lying within Lot 8 of Huntsville North Village Phase 1-A as recorded in Plat Book 2026, Pages 41-42 in the Office of the Judge of Probate, Madison County, Alabama, and being a portion a 30-foot wide Public Utility and Drainage Easement and being more particularly described as follows:

Commencing at the northeast corner of Lot 8 of said Huntsville North Village Phase 1-A, said point having Alabama State Plane Coordinates of N: 1575112.04, E: 432725.94; thence run South 85 degrees 08 minutes 29 seconds West, 45.28 feet to the Point of Beginning;

Thence, from the Point of Beginning, run South 01 degrees 29 minutes 41 seconds West 170.06 feet to a point; thence run North 20 degrees 36 minutes 53 seconds East 114.49 feet to a point; thence run South 01 degrees 29 minutes 37 seconds West 91.58 feet to a point; thence run South 20 degrees 36 minutes 53 seconds West 36.77 feet to a point; thence run North 89 degrees 12 minutes 11 seconds West 35.46 feet to a point; thence run North 01 degrees 29 minutes 41 seconds East 189.87 feet to a point; thence run 10.07 feet along a curve to the left having a radius of 2710.00 feet, a delta angle of 00 degrees 12 minutes 47 seconds, and a chord bearing and distance of South 81 degrees 31 minutes 32 seconds East, 10.07 feet back to the Point of Beginning.

Said parcel contains 0.101 acres (4,396 sq. ft.) more or less.

Exhibit "C-1" (Depiction of Vacated Easement C) Diagram showing easement C-1 with bearings and distances, including Alabama State Plane Coordinates and a scale of 1" = 60'.

Exhibit "D" (Legal Description of Vacated Easement D) A parcel of land situated in the Northeast Quarter of Section 36, Township 2 South, Range 1 West of the Huntsville Meridian, Madison County, Alabama, (BEARINGS AND/OR DISTANCES and COORDINATES referenced to the Alabama State Plane Coordinate System, East Zone, NAD83(2011)) and lying within Lot 7 of Huntsville North Village Phase 1-A as recorded in Plat Book 2026, Pages 41-42 in the Office of the Judge of Probate, Madison County, Alabama, and being a portion a 30-foot wide Public Utility and Drainage Easement and being more particularly described as follows:

Commencing at the northwest corner of Lot 7 of said Huntsville North Village Phase 1-A, said point having Alabama State Plane Coordinates of N: 1575112.04, E: 432725.94; thence run South 47 degrees 24 minutes 07 seconds East, 41.18 feet to the Point of Beginning;

Thence, from the Point of Beginning, run thence run North 88 degrees 04 minutes 22 seconds East 48.00 feet to a point; thence run South 49 degrees 23 minutes 12 seconds West 78.31 feet to a point; thence run South 20 degrees 36 minutes 53 seconds West 40.75 feet to a point; thence run North 01 degree 29 minutes 37 seconds East 66.87 feet to a point; thence run North 49 degrees 23 minutes 12 seconds East 31.72 feet back to the Point of Beginning.

Said parcel contains 0.048 acres (2,097 sq. ft.) more or less.

Exhibit "D-1" (Depiction of Vacated Easement D) Diagram showing easement D-1 with bearings and distances, including Alabama State Plane Coordinates and a scale of 1" = 100'.

Exhibit "B-1" (Depiction of Vacated Easement B)

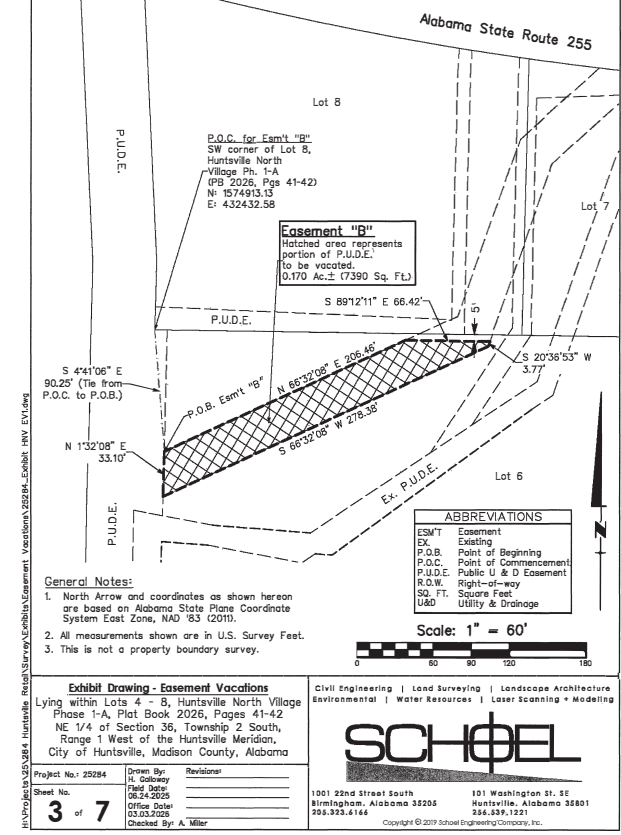


Exhibit "C" (Legal Description of Vacated Easement C)

A parcel of land situated in the Northeast Quarter of Section 36, Township 2 South, Range 1 West of the Huntsville Meridian, Madison County, Alabama, (BEARINGS AND/OR DISTANCES and COORDINATES referenced to the Alabama State Plane Coordinate System, East Zone, NAD83(2011)) and lying within Lot 8 of Huntsville North Village Phase 1-A as recorded in Plat Book 2026, Pages 41-42 in the Office of the Judge of Probate, Madison County, Alabama, and being a portion a 30-foot wide Public Utility and Drainage Easement and a portion of a 10-foot wide Public Utility and Drainage Easement and being more particularly described as follows:

Commencing at the northeast corner of Lot 8 of said Huntsville North Village Phase 1-A, said point having Alabama State Plane Coordinates of N: 1575112.04, E: 432725.94; thence run South 85 degrees 08 minutes 29 seconds West, 45.28 feet to the Point of Beginning;

Thence, from the Point of Beginning, run South 01 degrees 29 minutes 41 seconds West 170.06 feet to a point; thence run North 20 degrees 36 minutes 53 seconds East 114.49 feet to a point; thence run South 01 degrees 29 minutes 37 seconds West 91.58 feet to a point; thence run South 20 degrees 36 minutes 53 seconds West 36.77 feet to a point; thence run North 89 degrees 12 minutes 11 seconds West 35.46 feet to a point; thence run North 01 degrees 29 minutes 41 seconds East 189.87 feet to a point; thence run 10.07 feet along a curve to the left having a radius of 2710.00 feet, a delta angle of 00 degrees 12 minutes 47 seconds, and a chord bearing and distance of South 81 degrees 31 minutes 32 seconds East, 10.07 feet back to the Point of Beginning.

Said parcel contains 0.101 acres (4,396 sq. ft.) more or less.

Exhibit "C-1" (Depiction of Vacated Easement C) Diagram showing easement C-1 with bearings and distances, including Alabama State Plane Coordinates and a scale of 1" = 60'.

Exhibit "D" (Legal Description of Vacated Easement D)

A parcel of land situated in the Northeast Quarter of Section 36, Township 2 South, Range 1 West of the Huntsville Meridian, Madison County, Alabama, (BEARINGS AND/OR DISTANCES and COORDINATES referenced to the Alabama State Plane Coordinate System, East Zone, NAD83(2011)) and lying within Lot 7 of Huntsville North Village Phase 1-A as recorded in Plat Book 2026, Pages 41-42 in the Office of the Judge of Probate, Madison County, Alabama, and being a portion a 30-foot wide Public Utility and Drainage Easement and being more particularly described as follows:

Commencing at the southwest corner of Lot 7 of said Huntsville North Village Phase 1-A, said point having Alabama State Plane Coordinates of N: 1574909.12, E: 432720.65; thence run South 76 degrees 56 minutes 25 seconds East, 23.54 feet to the Point of Beginning;

Thence, from the Point of Beginning, run South 89 degrees 12 minutes 11 seconds East 15.98 feet to a point; thence run South 20 degrees 36 minutes 53 seconds West 41.52 feet to a point; thence run South 57 degrees 57 minutes 45 seconds West 19.37 feet to a point; thence run South 55 degrees 35 minutes 24 seconds West 90.66 feet to a point; thence run North 34 degrees 57 minutes 44 seconds East 48.23 feet to a point; thence run North 57 degrees 57 minutes 45 seconds East 60.55 feet to a point; thence run North 20 degrees 36 minutes 53 seconds East 30.92 feet back to the Point of Beginning.

Said parcel contains 0.044 acres (1,918 sq. ft.) more or less.

Exhibit "E-1" (Depiction of Vacated Easement E)

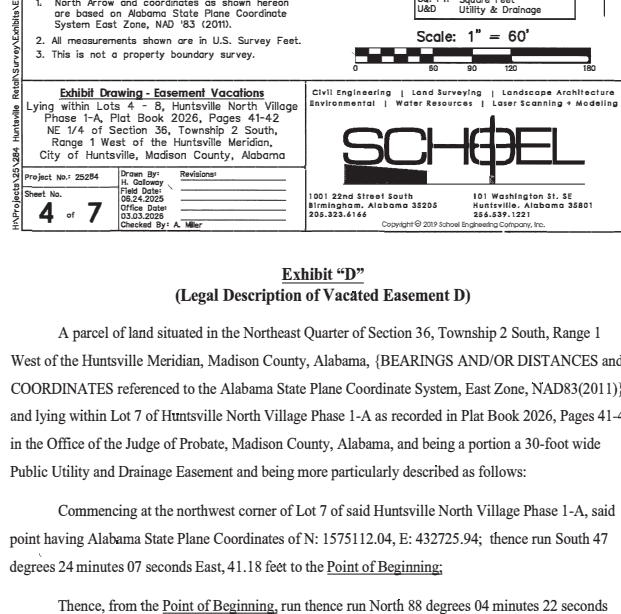


Exhibit "F" (Legal Description of Vacated Easement F)

A parcel of land situated in the Northeast Quarter of Section 36, Township 2 South, Range 1 West of the Huntsville Meridian, Madison County, Alabama, (BEARINGS AND/OR DISTANCES and COORDINATES referenced to the Alabama State Plane Coordinate System, East Zone, NAD83(2011)) and lying within Lot 6 of Huntsville North Village Phase 1-A as recorded in Plat Book 2026, Pages 41-42 in the Office of the Judge of Probate, Madison County, Alabama, and being a portion a 30-foot wide Public Utility and Drainage Easement and being more particularly described as follows:

Commencing at the southwest corner of Lot 8 of said Huntsville North Village Phase 1-A, said point having Alabama State Plane Coordinates of N: 1574913.13, E: 432432.58; thence run South 04 degrees 41 minutes 06 seconds East, 90.25 feet to the Point of Beginning;

Thence, from the Point of Beginning, run North 66 degrees 32 minutes 08 seconds East 206.46 feet to a point; thence run South 89 degrees 12 minutes 11 seconds East 66.42 feet to a point; thence run South 20 degrees 36 minutes 53 seconds West 3.77 feet to a point; thence run South 66 degrees 32 minutes 08 seconds West 278.38 feet to a point; thence run North 01 degree 32 minutes 08 seconds East 33.10 feet back to the Point of Beginning.

Said parcel contains 0.170 acres (7,390 sq. ft.) more or less.

Exhibit "B" (Legal Description of Vacated Easement B)

A parcel of land situated in the Northeast Quarter of Section 36, Township 2 South, Range 1 West of the Huntsville Meridian, Madison County, Alabama, (BEARINGS AND/OR DISTANCES and COORDINATES referenced to the Alabama State Plane Coordinate System, East Zone, NAD83(2011)) and lying within Lot 6 of Huntsville North Village Phase 1-A as recorded in Plat Book 2026, Pages 41-42 in the Office of the Judge of Probate, Madison County, Alabama, and being a portion a 30-foot wide Public Utility and Drainage Easement and being more particularly described as follows:

Commencing at the southwest corner of Lot 8 of said Huntsville North Village Phase 1-A, said point having Alabama State Plane Coordinates of N: 1574913.13, E: 432432.58; thence run South 04 degrees 41 minutes 06 seconds East, 90.25 feet to the Point of Beginning;

Thence, from the Point of Beginning, run North 66 degrees 32 minutes 08 seconds East 206.46 feet to a point; thence run South 89 degrees 12 minutes 11 seconds East 66.42 feet to a point; thence run South 20 degrees 36 minutes 53 seconds West 3.77 feet to a point; thence run South 66 degrees 32 minutes 08 seconds West 278.38 feet to a point; thence run North 01 degree 32 minutes 08 seconds East 33.10 feet back to the Point of Beginning.

Said parcel contains 0.170 acres (7,390 sq. ft.) more or less.



Exhibit "E" (Legal Description of Vacated Easement E)

A parcel of land situated in the Northeast Quarter of Section 36, Township 2 South, Range 1 West of the Huntsville Meridian, Madison County, Alabama, (BEARINGS AND/OR DISTANCES and COORDINATES referenced to the Alabama State Plane Coordinate System, East Zone, NAD83(2011)) and lying within Lot 7 of Huntsville North Village Phase 1-A as recorded in Plat Book 2026, Pages 41-42 in the Office of the Judge of Probate, Madison County, Alabama, and being a portion a 15-foot wide Public Utility and Drainage Easement and being more particularly described as follows:

Commencing at the northwest corner of Lot 7 of said Huntsville North Village Phase 1-A, said point having Alabama State Plane Coordinates of N: 1575112.04, E: 432725.94; thence run South 75 degrees 25 minutes 15 seconds East, 104.61 feet to the Point of Beginning;

Thence, from the Point of Beginning, run 21.10 feet along a curve to the left having a radius of 2715.00 feet, a delta angle of 00 degrees 26 minutes 43 seconds, and a chord bearing and distance of South 84 degrees 58 minutes 52 seconds East 21.10 feet to a point; thence run South 49 degrees 23 minutes 12 seconds West 40.51 feet to a point; thence run South 20 degrees 36 minutes 53 seconds West 148.49 feet to a point; thence run North 89 degrees 12 minutes 11 seconds West 15.98 feet to a point; thence run North 20 degrees 36 minutes 53 seconds East 157.87 feet to a point; thence run North 49 degrees 23 minutes 12 seconds East 59.51 feet back to the Point of Beginning.

Said parcel contains 0.065 acres (2,830 sq. ft.) more or less.

Exhibit "E-1" (Depiction of Vacated Easement E) Diagram showing easement E-1 with bearings and distances, including Alabama State Plane Coordinates and a scale of 1" = 60'.

Exhibit "E-1" (Legal Description of Vacated Easement E)

A parcel of land situated in the Northeast Quarter of Section 36, Township 2 South, Range 1 West of the Huntsville Meridian, Madison County, Alabama, (BEARINGS AND/OR DISTANCES and COORDINATES referenced to the Alabama State Plane Coordinate System, East Zone, NAD83(2011)) and lying within Lot 7 of Huntsville North Village Phase 1-A as recorded in Plat Book 2026, Pages 41-42 in the Office of the Judge of Probate, Madison County, Alabama, and being a portion a 15-foot wide Public Utility and Drainage Easement and being more particularly described as follows:

Commencing at the northwest corner of Lot 7 of said Huntsville North Village Phase 1-A, said point having Alabama State Plane Coordinates of N: 1575112.04, E: 432725.94; thence run South 75 degrees 25 minutes 15 seconds East, 104.61 feet to the Point of Beginning;

Thence, from the Point of Beginning, run 21.10 feet along a curve to the left having a radius of 2715.00 feet, a delta angle of 00 degrees 26 minutes 43 seconds, and a chord bearing and distance of South 84 degrees 58 minutes 52 seconds East 21.10 feet to a point; thence run South 49 degrees 23 minutes 12 seconds West 40.51 feet to a point; thence run South 20 degrees 36 minutes 53 seconds West 148.49 feet to a point; thence run North 89 degrees 12 minutes 11 seconds West 15.98 feet to a point; thence run North 20 degrees 36 minutes 53 seconds East 157.87 feet to a point; thence run North 49 degrees 23 minutes 12 seconds East 59.51 feet back to the Point of Beginning.

Said parcel contains 0.065 acres (2,830 sq. ft.) more or less.

Exhibit "E-1" (Depiction of Vacated Easement E) Diagram showing easement E-1 with bearings and distances, including Alabama State Plane Coordinates and a scale of 1" = 60'.

Exhibit "F" (Legal Description of Vacated Easement F)

A parcel of land situated in the Northeast Quarter of Section 36, Township 2 South, Range 1 West of the Huntsville Meridian, Madison County, Alabama, (BEARINGS AND/OR DISTANCES and COORDINATES referenced to the Alabama State Plane Coordinate System, East Zone, NAD83(2011)) and lying within Lot 6 of Huntsville North Village Phase 1-A as recorded in Plat Book 2026, Pages 41-42 in the Office of the Judge of Probate, Madison County, Alabama, and being a portion a Public Utility and Drainage Easement and being more particularly described as follows:

Commencing at the southwest corner of Lot 7 of said Huntsville North Village Phase 1-A, said point having Alabama State Plane Coordinates of N: 1574909.12, E: 432720.65; thence run South 76 degrees 56 minutes 25 seconds East, 23.54 feet to the Point of Beginning;

Thence, from the Point of Beginning, run South 89 degrees 12 minutes 11 seconds East 15.98 feet to a point; thence run South 20 degrees 36 minutes 53 seconds West 41.52 feet to a point; thence run South 57 degrees 57 minutes 45 seconds West 19.37 feet to a point; thence run South 55 degrees 35 minutes 24 seconds West 90.66 feet to a point; thence run North 34 degrees 57 minutes 44 seconds East 48.23 feet to a point; thence run North 57 degrees 57 minutes 45 seconds East 60.55 feet to a point; thence run North 20 degrees 36 minutes 53 seconds East 30.92 feet back to the Point of Beginning.

Said parcel contains 0.044 acres (1,918 sq. ft.) more or less.

Exhibit "F-1" (Depiction of Vacated Easement F) Diagram showing easement F-1 with bearings and distances, including Alabama State Plane Coordinates and a scale of 1" = 60'.

Exhibit "F" (Legal Description of Vacated Easement F)

A parcel of land situated in the Northeast Quarter of Section 36, Township 2 South, Range 1 West of the Huntsville Meridian, Madison County, Alabama, (BEARINGS AND/OR DISTANCES and COORDINATES referenced to the Alabama State Plane Coordinate System, East Zone, NAD83(2011)) and lying within Lot 6 of Huntsville North Village Phase 1-A as recorded in Plat Book 2026, Pages 41-42 in the Office of the Judge of Probate, Madison County, Alabama, and being a portion a Public Utility and Drainage Easement and being more particularly described as follows:

Commencing at the southwest corner of Lot 7 of said Huntsville North Village Phase 1-A, said point having Alabama State Plane Coordinates of N: 1574909.12, E: 432720.65; thence run South 76 degrees 56 minutes 25 seconds East, 23.54 feet to the Point of Beginning;

Thence, from the Point of Beginning, run South 89 degrees 12 minutes 11 seconds East 15.98 feet to a point; thence run South 20 degrees 36 minutes 53 seconds West 41.52 feet to a point; thence run South 57 degrees 57 minutes 45 seconds West 19.37 feet to a point; thence run South 55 degrees 35 minutes 24 seconds West 90.66 feet to a point; thence run North 34 degrees 57 minutes 44 seconds East 48.23 feet to a point; thence run North 57 degrees 57 minutes 45 seconds East 60.55 feet to a point; thence run North 20 degrees 36 minutes 53 seconds East 30.92 feet back to the Point of Beginning.

Said parcel contains 0.044 acres (1,918 sq. ft.) more or less.

Exhibit "F-1" (Depiction of Vacated Easement F) Diagram showing easement F-1 with bearings and distances, including Alabama State Plane Coordinates and a scale of 1" = 60'.

ORDINANCE NO. 26-309

ADOPTED this 9th day of April, 2026.

Signature: Jamie Robinson, President of the City Council of the City of Huntsville, Alabama

Signature: Tommy Battle, Mayor of the City of Huntsville, Alabama

RESOLUTION NO. 26-315

WHEREAS, Chapter 7 of Title 17 of the Alabama Code of 1975, and the regulations adopted pursuant thereto by the Alabama Electronic Voting Committee, provide for use of Electronic Vote Counting Systems; and

WHEREAS, Section 17-2-21 of the Code of Alabama 1975, provides that a municipality may, in its discretion, by adoption of an appropriate Resolution, authorize, adopt, and direct the use of electronic vote counting systems for use in all elections held in such municipality;

WHEREAS, Section 17-2-4 of the Code of Alabama 1975 requires the voting system to be accessible for individuals with disabilities, including nonvisual accessibility for the blind and visually impaired, in a manner that provides the same opportunity for access and participation, including privacy and independence, as for other voters.

NOW, THEREFORE, BE IT RESOLVED, by the City Council of the City of Huntsville, Alabama, that for all elections held subsequent to the passage of this Resolution, the use of DS200 Precinct Scanner and Tabulator electronic voting devices, a system which complies with Section 17-2-21 of the Code of Alabama and the use of ExpressVote machine to provide assistance to disabled voters which complies with Section 17-2-4 of the Code of Alabama and any regulations adopted pursuant thereto, is hereby authorized for the reporting, counting, and tabulating of any and all election results.

BE IT FURTHER RESOLVED, that the Mayor of the City of Huntsville is hereby directed to file a copy of this Resolution with the Secretary of State as provided in Section 17-2-4 of the Code of Alabama 1975.

ADOPTED this 9th day of April, 2026.

Signature: Jamie Robinson, President of the City Council of the City of Huntsville, Alabama

Signature: Tommy Battle, Mayor of the City of Huntsville, Alabama